

DC to AC Inverters

Connector type, Dimming, 7W, for 2 Bulbs

Conformity to RoHS Directive

CXA Series CXA-0217

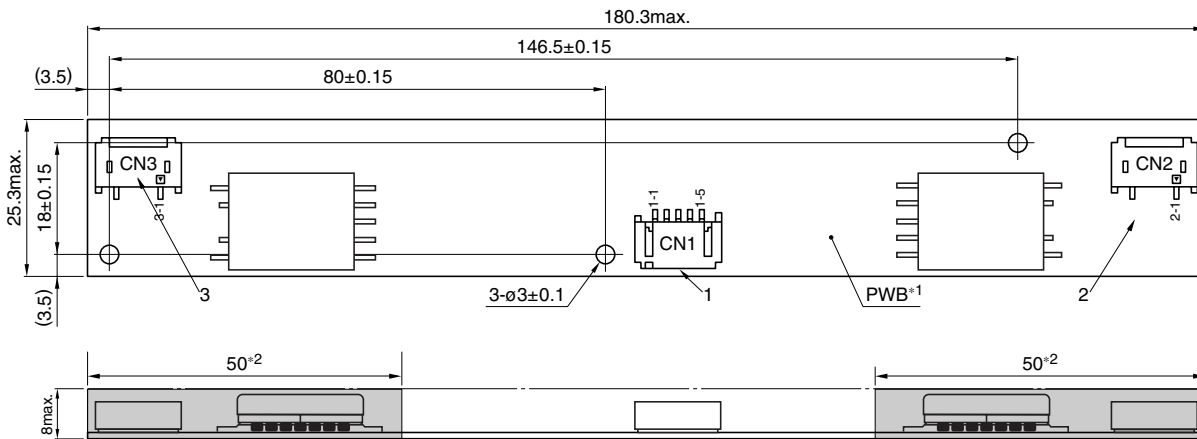
FEATURES

- For 2 bulbs.
- Applicable panel size* : 10 to 15-inch
- With brightness control function.
- The high-voltage terminals are coated with silicone so as to avoid the defects caused by dust.
- It is a product conforming to RoHS directive.
- * The applicable panel size is for typical reference dimensions.

TEMPERATURE AND HUMIDITY RANGES

| | | |
|------------------------|-----------|--|
| Temperature range (°C) | Operating | 0 to +70 |
| | Storage | -30 to +85 |
| Humidity range(%)RH | | 95max. |
| | | [Maximum wet-bulb temperature 38°C. No dew.] |

SHAPES AND DIMENSIONS



*1 Substrate(PWB: Printed wiring board): Flame retardant material UL94V-0(FR-4 or CEM-3) t=1mm

Weight: 21g typ.

*2 : High-voltage generator (The entire surface within a range of 50mm away from the end of the base in the output)

Dimensions in mm

| | Connector manufacturer's company and type | Symbol |
|--------------------|--|--------|
| 1 Input connector | Japan Solderless Terminal Co., Ltd. S5B-PH-SM4 | CN1 |
| 2 Output connector | Japan Solderless Terminal Co., Ltd. SM02(8.0)B-BHS-1 | CN2 |
| 3 Output connector | Japan Solderless Terminal Co., Ltd. SM02(8.0)B-BHS-1 | CN3 |

TERMINAL NUMBERS AND FUNCTIONS

CN1

| Terminal No. | Function | Symbol |
|--------------|---|------------------|
| CN1-1 | Input voltage Edc: 9.6 to 14.4V/12V[nom.] | V _{in} |
| CN1-2 | 0V | GND |
| CN1-3 | Brightness dimmer voltage Edc: 0 to 3.4V(Maximum brightness on 0V) | V _{br} |
| CN1-4 | Used in the internal circuits, do not connect. | N.C. |
| CN1-5 | Remote voltage Edc 0V: off/5 to 7V:on | V _{rmt} |

CN3

| Terminal No. | Function | | Symbol |
|--------------|---|----------|--------------------|
| CN3-1 | Output 2[High voltage] I _{rms} | 2 to 6mA | V _{HIGH2} |
| CN3-2 | — | | N.C. |
| CN3-3 | Output 2[Low voltage] | (2V) | V _{LOW2} |

CN2

| Terminal No. | Function | | Symbol |
|--------------|---|----------|--------------------|
| CN2-1 | Output 1[High voltage] I _{rms} | 2 to 6mA | V _{HIGH1} |
| CN2-2 | — | | N.C. |
| CN2-3 | Output 1[Low voltage] | (2V) | V _{LOW1} |

• Conformity to RoHS Directive: This means that, in conformity with EU Directive 2002/95/EC, lead, cadmium, mercury, hexavalent chromium, and specific bromine-based flame retardants, PBB and PBDE, have not been used, except for exempted applications.

• All specifications are subject to change without notice.

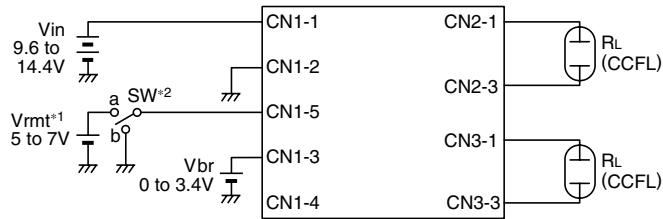
CXA-0217

ELECTRICAL CHARACTERISTICS

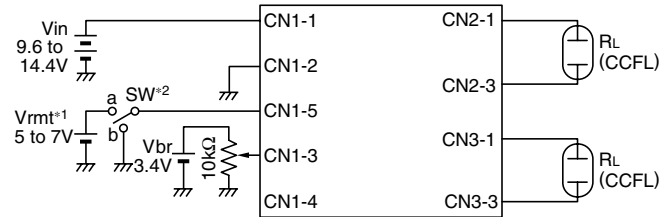
| Item | Unit | Symbol | Specification | | | Condition | | | | Brightness |
|--|------|-------------------|---------------|------|------|---------------------|---------------------|---------------------|---------------------|------------|
| | | | min. | typ. | max. | V _{in} (V) | V _{br} (V) | T _a (°C) | R _L (kΩ) | |
| Output current I _{rms} | mA | lout1 | 5.3 | 6 | 6.7 | 12±2.4 | 0 | 0 to +70 | 76 to 114 | Maximum |
| | | lout2 | 5.3 | 6 | 6.7 | 12±2.4 | 0 | 0 to +70 | 76 to 114 | Maximum |
| | | lout1 | 5.5 | 6 | 6.5 | 12±1.2 | 0 | 0 to +70 | 95 | Maximum |
| | | lout2 | 5.5 | 6 | 6.5 | 12±1.2 | 0 | 0 to +70 | 95 | Maximum |
| | | lout1 | 1.7 | 2 | 2.4 | 12±1.2 | 3.4 | 0 to +70 | 250 | Minimum |
| | | lout2 | 1.7 | 2 | 2.4 | 12±1.2 | 3.4 | 0 to +70 | 250 | Minimum |
| Input current I _{dc} | A | I _{in} | — | 0.76 | 1.3 | 12±2.4 | 0 to 3.4 | 0 to +70 | 76 to 114 | |
| Oscillation frequency | kHz | F _L | 52 | 58 | 64 | 12±2.4 | 0 | 0 to +70 | 95 | |
| Open circuit output voltage E _{rms} | V | V _{open} | 1400 | 1500 | 2000 | 12±2.4 | 0 to 3.4 | 0 to +70 | ∞ | |

TYPICAL CONNECTIONS

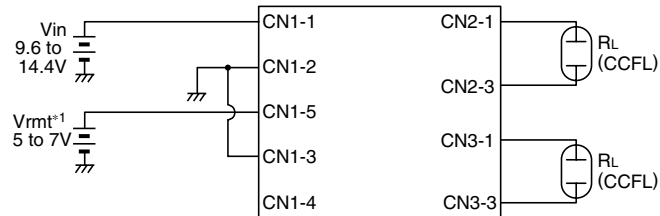
EXAMPLE OF VOLTAGE DIMMER CONTROL



EXAMPLE OF POTENTIOMETER DIMMER CONTROL



NO DIMMER CONTROL (BRIGHTNESS MAX.)



*1 V_{rmt} (remote voltage) shall be ON after V_{in} is ON.

*2 SW a:on, b:off

BRIGHTNESS DIMMER VOLTAGE- OUTPUT CURRENT CHARACTERISTICS

